



 **Identicom[®] mobile**
Protecting lone workers could save your business

PROTECTING YOUR STAFF HAS NEVER BEEN MORE IMPORTANT

Every employer has a duty of care to make provision for staff with regards to a safe workplace, including those who work remotely or 'outside of close or direct supervision' - the HSE's (Health and Safety Executive) definition of a lone worker. There are currently around [3.5 million lone workers](#) in the United Kingdom*, each completing a wide range of activities as part of their job roles, resulting in an individual risk profile.

Tens of thousands of lone workers are attacked in the UK every single year. Figures supplied by Unison announced that [over 28,000 reported attacks in the public sector](#) alone were made on lone workers in 2009/10. Our analysis of data suggests that around 160 attacks on lone workers are made daily (statistics taken as an average for 2008/09 from a variety of sector sources including the NHS, Retailers against crime, and Inside Housing).

Slips, trips and falls [cost UK industry over £700 million in 2008](#) with 61 deaths and 14,000 serious injuries. In 2009 there were 10,368 major non-fatal slip accidents and 23,797 slip accidents, resulting in a staff absence of over three days (Source HSE).

Connexion2's Identicom mobile lone worker application installed on Pision EP10 gives a lone worker the means to [dynamically assess risk, receive assistance when at risk, and the peace-of-mind that help is always within reach](#). Using an app also offers them protection without needing to carry an additional device.

- > [Corporate Manslaughter fines are recommended to start at £500,000 and are currently uncapped](#)
- > [Tens of thousands of UK lone workers attacked every year](#)
- > [Slips and trips cost UK employers £512 million every year](#)

Around 160 attacks on lone workers are made daily.



* Source: Our analysis of data provided by the Office of National Statistics (ONS) 2009

IDENTICOM MOBILE ON PSION EP10

Identicom mobile is a smart phone app that [allows a lone worker to reduce the risks they face](#) as part of a working day. It is easy to install, has an intuitive user-interface and enables a worker to raise an alarm if they feel their safety could be compromised or they become incapacitated. A range of new sensors in the Psion EP10 allows the compelling proposition of a lone worker application featuring automatic 'Man Down' detection.

Identicom mobile is police-approved through being awarded 'Secured by Design' status from ACPO (Association of Chief Police Officers England and Wales) and is also approved against BS8484 (the British Standard for Lone Worker Device Services) through audit. This guarantees a lone worker using Identicom mobile on EP10, a police escalation at a regional level through a URN (Unique Reference Number) where appropriate, which is currently the most effective way to elicit a police response in the UK.



Gyroscope



Accelerometer



Light sensor



GPS



Magnetometer



Proximity Sensor

It's important for organisations to assess and understand the risks faced by its staff.

Secured by Design



Police Preferred Specification

NSI



REDUCE BUSINESS RISK AND MEET YOUR DUTY OF CARE

Statutory legislation for Health and Safety in the UK such as 'The Health and Safety at Work Act 1974' and 'Management of Health and Safety at Work Regulations 1999' is regulated by the HSE. Any investigations uncovering breaches of a relevant act [can result in substantial fines being levied](#) against an organisation, often from tens of hundreds of thousands of pounds, where deemed appropriate.

Criminal Legislation in the form of the [Corporate Manslaughter and Corporate Homicide Act 2007](#) means that any company suffering a death in the workplace will be investigated jointly by the Police and the HSE. Any organisation found guilty of breaching the act can be charged a potentially limitless fine of more than £500,000. Catastrophic brand equity and share-price damage can also result from the enforcement of Publicity Orders announcing the conviction. Whilst cases of Corporate Manslaughter and Corporate Homicide can only relate to a business, cases of Gross Negligence Manslaughter against individuals can also run concurrently - should the Crown Prosecution Service (CPS) deem it necessary.

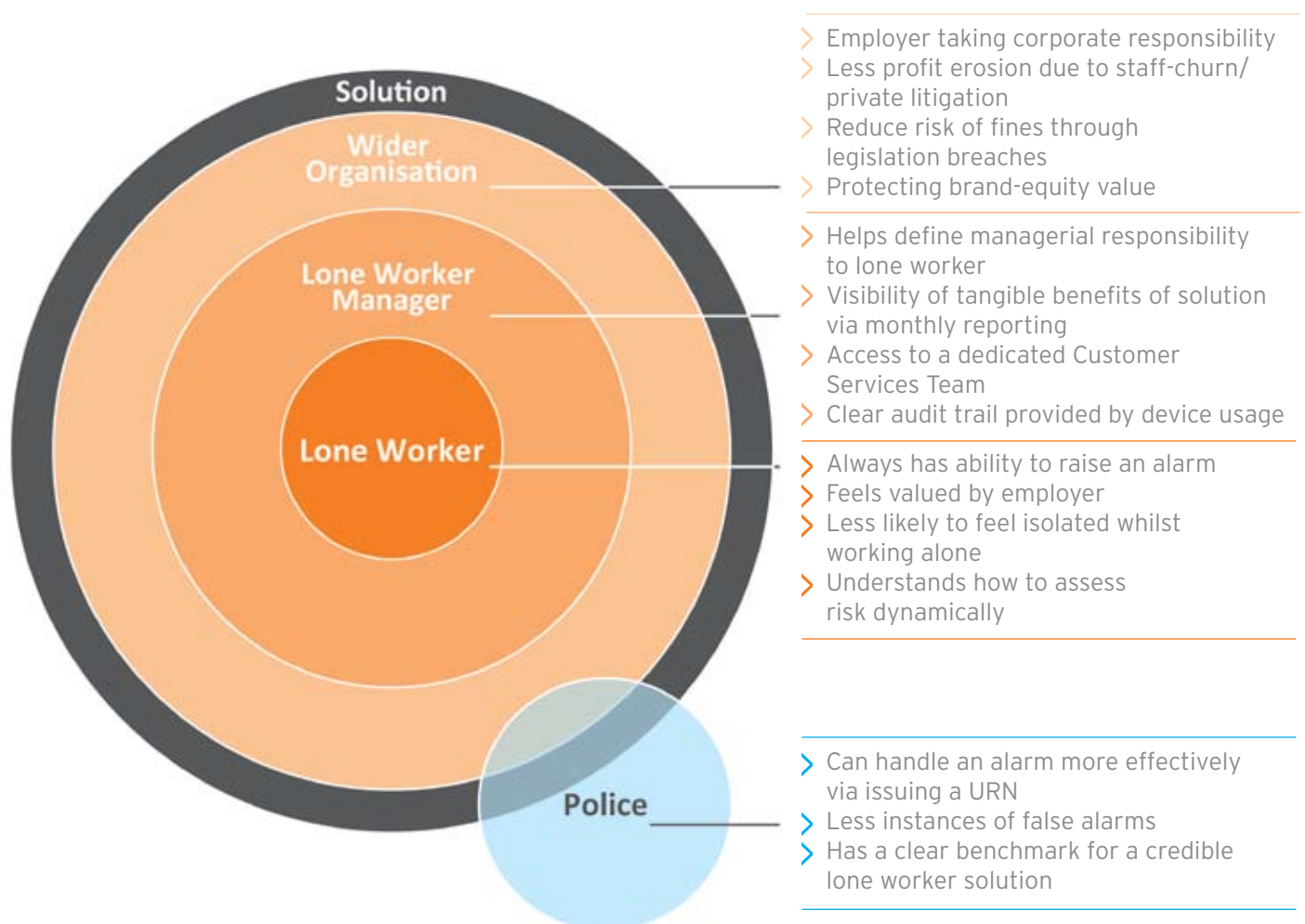
Aside from the cases where a fatality occurs, not looking after staff can impact on the day-to-day running costs of an organisation, eroding profits:

- The HSE estimates the cost of a single physical attack to cost an organisation **in excess of £20,000**
- Consider the **costs of sick pay**, temporary or replacement staffing, higher insurance premiums, missed deadlines, and potential customer dissatisfaction
- **Costs of defending litigation** from 'at risk' lone workers, including damages payable (in or out of court), if pursued legally
- **Management time** spent investigating and subsequently reporting on incidents.



WHO BENEFITS?

Who benefits from our BS8484 approved lone worker solution?



Any organisation convicted under Corporate Manslaughter legislation can be fined upwards of £500,000.

THE SOLUTION

Identicom mobile is supplied as part of a fully managed solution for lone workers. Supporting the individual lone working staff as well as the wider organisation:



To find out more about Identicom Mobile on Psion EP10, please call

 **Connexion2** on **0844 856 6606** or e-mail **info@connexion2.com**

PSION EP10 - TECHNICAL SPECIFICATIONS

MODEL NUMBER: 7515
MODEL NAME: EP10



PLATFORM

- Industrial-class AM3715 Sitara microprocessor (ARM Cortex A8) @ 800 MHz
- **On-board RAM:** 256 MB SDRAM
- **On-board ROM:** 2 GB Flash

WIRELESS COMMUNICATIONS

- On-board IEEE 802.11a/b/g/n (CCX V4 Certified) radio:
 - **Security:** 802.1X, WPA/WPA2-Enterprise
 - **Authentication:** FAST-MSCHAPv2; LEAP; PEAPv0-MSCHAPv2; PEAPv1-GTC; TLS
 - **Encryption:** 64/128 WEP, AES-CCMP, TKIP
- Bluetooth® v2.0 + EDR radio
- UMTS 3.8G HSPA+ radio
 - **Five Band UMTS:** 800/850, AWS, 1900, 2100 MHz
 - **Quad-Band GSM:** 850, 900, 1800, 1900 MHz
- CDMA EVDO Rev A radio
 - **Dual Band:** 800/1900 MHz
- Integrated 5 band Antenna, supports both voice and data
- SiRFstarIV GPS with SiRFInstantFix A-GPS support (48 channel)
- Active jammer removal

OPERATING SYSTEM

- Windows® Embedded Handheld 6.5.3

APPLICATION SOFTWARE

- Windows® Office Mobile 2010, includes Word, Excel, PowerPoint, OneNote and SharePoint
- Internet Explorer Mobile
- Windows Office Outlook Mobile
- Windows Media Player Mobile
- Device Management Software – Mobile Control Center:
 - Easy configuration management and provisioning platform
 - Powerful remote control and troubleshooting functionality
 - Integrated real time geofencing and location services
 - Advanced device security, user authentication and lockdown features
- Psion Software Advantage facilitates customisation, deployment and enhanced productivity

PROGRAMMING ENVIRONMENT

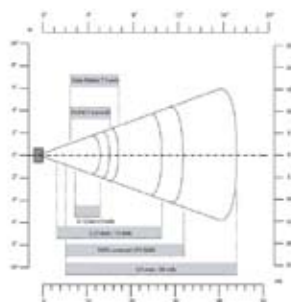
- HTML, XML
- Mobile Devices SDK
- Java™
- Visual Studio® 2008
- Standard protocol APIs – Windows® sockets



BARCODE APPLICATIONS

- EA11 2D Imager
- Scanning Performances:
 - **Scan Rate:** 2D mode: 56 images/s auto adaptive
 - **Linear emulation mode:** 200 scans/s auto adaptive
 - **Scan angle:** 38.9° (Horizontal), 25.4° (Vertical)
 - **Optical resolution:** 752 (H) x 480 (V) pixels, 256 gray levels
 - **Print Contrast:** down to 25%
 - **Versions:** Standard range and high density
- Symbolologies:
 - **1D symbolologies:** EAN/UPC, GS1 Databar (limited expanded & omni-directional), RSS, Code 39, Code 128, UCC/EAN 128, ISBN, ISBT, Interleaved/Matrix/Industrial and Standard 2 of 5, Codabar, Code 93/93i, Code 11, MSI, Plessey, Telepen, postal codes (Australian Post, BPO, Canada Post, Dutch Post, Japan Post, PostNet, Sweden Post)
 - **2D symbolologies:** Data Matrix, PDF417, Micro PDF 417, Codablock Maxicode, QR, Aztec GS1 composite codes. Scan angle: 38.9° (Horizontal), 25.4° (Vertical)

EA11 Standard Optics



ENHANCED FEATURES

- Accelerometer
- Digital Compass
- Gyroscope
- Light Sensor
- Proximity Sensor

DISPLAY

- 3.7" VGA portrait mode
- Backlight feature 165 cd/m2 output
- Sunlight readable with integrated touch screen
- Colour 480 x 640 graphic TFT
- Passive stylus or finger operation

AUDIO & VOICE

- Built-in 85db mono speaker
- Microphone
- Receiver
- Supports VoIP, speech recognition, and Push-to-Talk applications
- Wireless Bluetooth® headset support
- Front and rear speakers

KEYPAD

- QWERTY



- AZERTY



- NUMERIC



- High reliability keypad ultra-white backlight
- Ergonomically enhanced for ambidextrous one-hand operation

CAMERA

- 3.2 Mega Pixel Colour
- Auto Focus
- Dual LED Flash
- Video capture capability

POWER MANAGEMENT

- Optional 3.7V @ 2400 mAh or High Cap 3600 mAh Li-ion rechargeable batteries
- Full Shift operation
- SMART battery
- System backup during battery swap

MEMORY EXPANSION SLOT

- MicroSD slot

ACCESSORIES

- Single Desktop Docking Station
- Quad Docking Station
- 4-Slot Battery Charger
- Vehicle Cradle (both Passive and Active options)
- CLA Charger
- Hand Strap
- Stylus & Tether
- Carrying Case options

SNAP MODULES

- USB and DC Input
- RS232 and DC input
- Customisable with HDK and SDK

PHYSICAL DIMENSIONS AND WEIGHT

- Device: 6.2" x 3.1" x 1.2" (158 mm x 78 mm x 30.6 mm)
- Weight with 2400 mAh battery: 0.76 lb (345 g)



REGULATORY APPROVALS

- FCC Parts 15B, 15C, 15E, 22H, 24E, 27
- IC RSS-210, RSS-132, RSS-133
- EN 300 328, EN 301 489, EN 55022, EN55024, EN301 511, EN301 908, EN300 440, EN301 893
- Safety IEC/EN 60950-1
- Laser Safety IEC 60825-1

USER ENVIRONMENT

- **Operating Temperature:** 14°F to 122°F (-10°C to +50°C)
- **Storage Temperature:** -4°F to 140°F (-20°C to +65°C)
- **Relative Humidity:** 5% to 95% RH non-condensing
- **Rain & Dust Protection:** IP54, IEC 529
- **Drop:** 5 ft (1.5 m) - 26 drops on each edge, corner, and face to polished concrete; multiple drops at 6 ft (1.8 m)
- **Tumble:** 1000 times at 0.5 m (2000 drops), IEC 60068-2-32
- **ESD:** +/- 15k Vdc air discharge, +/- 8k Vdc contacts

A complete list of accessories is available at www.pSION.com

Product is ROHS Compliant.

* Note this product will carry the CE Mark.
* Specifications are subject to change without notice.

Identicom® mobile

Identicom mobile is a registered trademark of Connexion 2 Limited.





Connexion2 Limited

5 Carrera Court, Church Lane,
Dinnington, Sheffield, S25 2RG
0844 856 6606
info@connexion2.com
www.connexion2.com